

# 2D Desktop Barcode Scanner

MG-4600



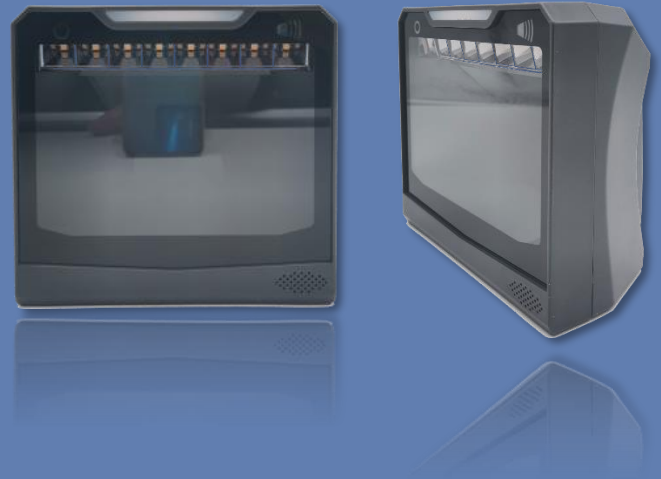
Windows



Android



Linux



## Product Features

1. Read all popular 1D and 2D barcodes
2. Read barcodes on screen
3. Plug and play, no driver
4. Compatible with various operating systems
5. IP54 protection rate, solid and reliable

## Product Picture



## Specification

### Mechanical

Weight:	437g
Cable Length:	2m
Dimension:	151mm x 142mm x 84mm

### Performance

Light Source:	Red LED
Max Decoding Speed:	2m/s
Resolution:	1280*1024
FOV:	65° (tilt), 65° (pitch), 360° rotation

### Electrical

Interface:	USB
Input Voltage:	DC 5V±5%
Startup Current:	380 mA
Standby Current:	190 mA
Operation Current:	240 mA

### DOF

Code	Mils	Min Distance	Max Distance
Code 39	5 mils	0 cm	12 cm
	13 mils	0 cm	24cm

### Environmental

Operation Temperature:	-20°C ~ +60°C (-4°F ~ 140°F)
Storage Temperature:	-30°C ~+ 70°C (-22°F ~ 158°F)
Humidity:	5% ~ 95% (Non-condensing)
Light Level:	0 ~ 100,000 LUX

### Reliability

High Temp:	70 °C
Low Temp:	-30 °C
Vibration:	8 G r.m.s., from 10 to 500 Hz, 2 hours per axis, 3 axes
Drop:	0.5m drop test

## Application

This barcode scanner is widely used in supermarket, retail, warehouse, logistics, medical and other fields.



Manufacture



Logistics



Retail,



Express Industry